

This guide shows the ultrasonographic anatomy of the fetlock, including the distal metacarpal(tarsal) region

The structures evaluated are all superficial, and frequently associated with irregular limb contours, so a high-frequency linear transducer and a standoff pad should be used.

Suspensory ligament branches

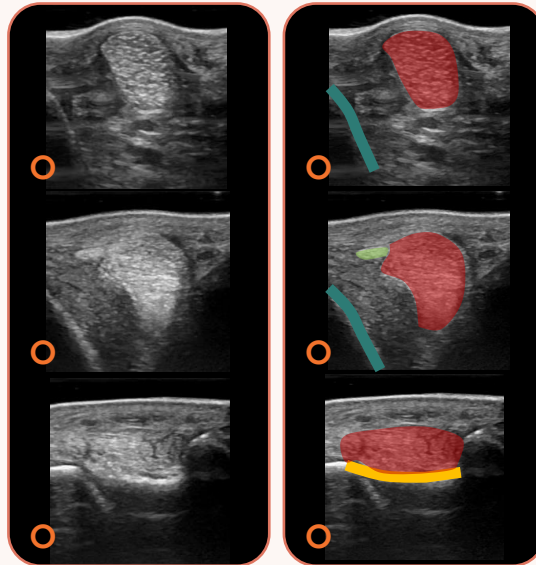
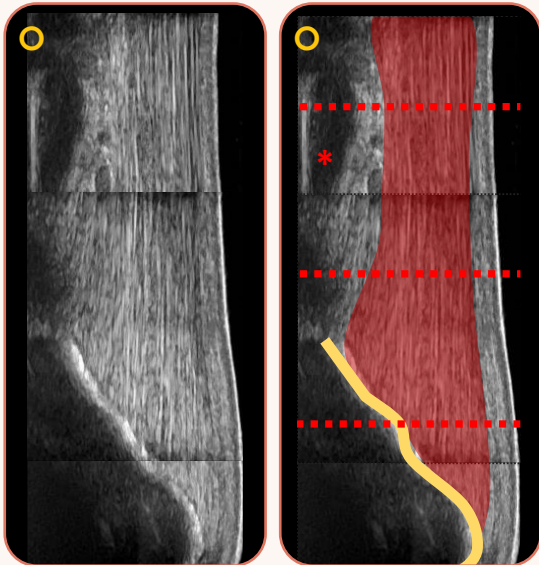
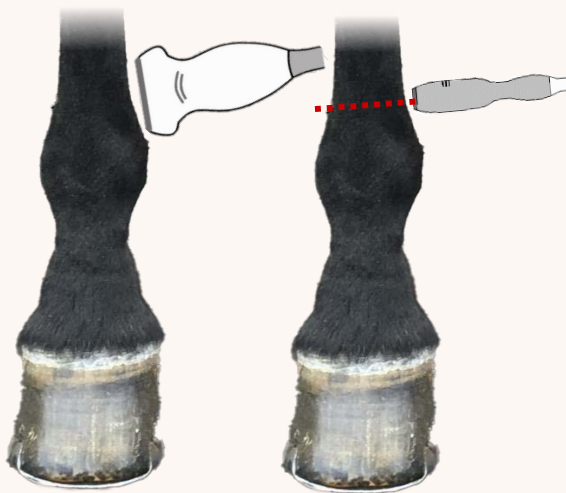


Image key

- suspensory ligament branch (SLB)
- dorsal part of SLB
- third metacarpal (tarsal) bone
- proximal sesamoid bone
- * digital flexor tendon sheath (fluid)



Collateral ligaments of the metacarpo(tarso) phalangeal joints

The long superficial collateral ligament (shown) is vertically orientated. The short deep collateral ligament is at a 30° angle from dorsoproximal to palmarodistal.

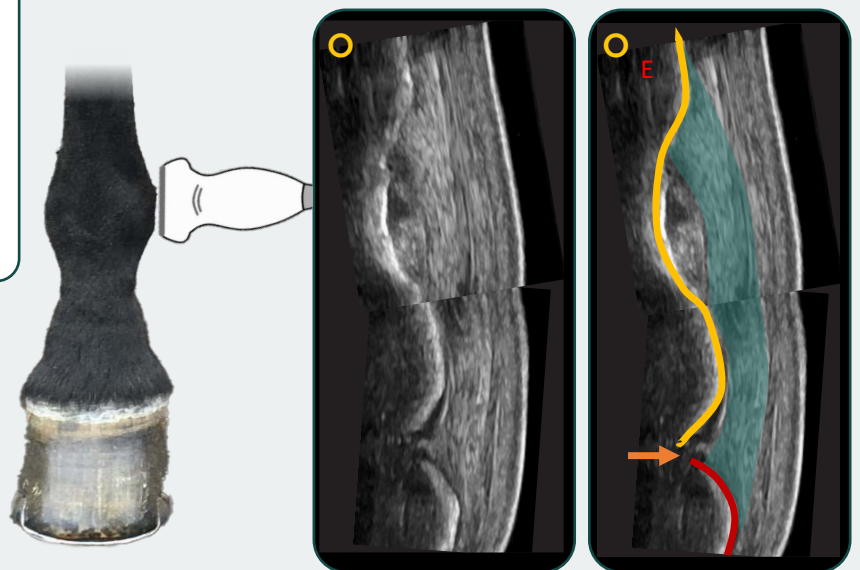


Image key

- superficial collateral ligament
- third metacarpal(tarsal) bone
- proximal phalanx
- metacarpo(tarso)phalangeal joint
- E epicondyle MC3/MT3

Key: ○ proximal, longitudinal image | ○ lateral, transverse image | ○ dorsal, transverse image

Dorsal aspect of the metacarpo(tarso)phalangeal (MCP/MTP) joint

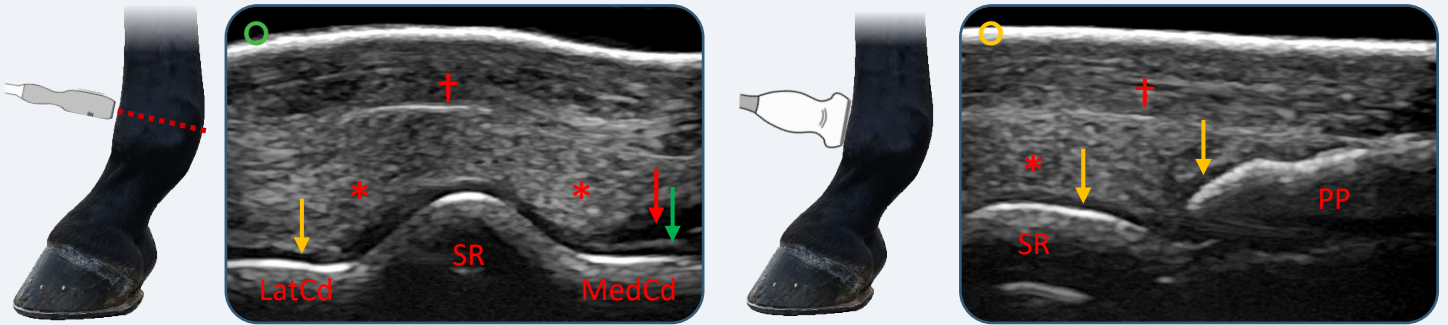


Image key

- | | | |
|--|--|--|
| SR sagittal ridge (MC3/MT3) | PP Dorsoproximal aspect of the proximal phalanx | → thin echoic interface between synovial fluid and cartilage |
| LatCd lateral condyle (MC3/MT3) | → articular cartilage | * synovial membrane |
| MedCd medial condyle (MC3/MT3) | → synovial fluid | † common (long) digital extensor tendon |

Palmar/Plantar aspect of the fetlock

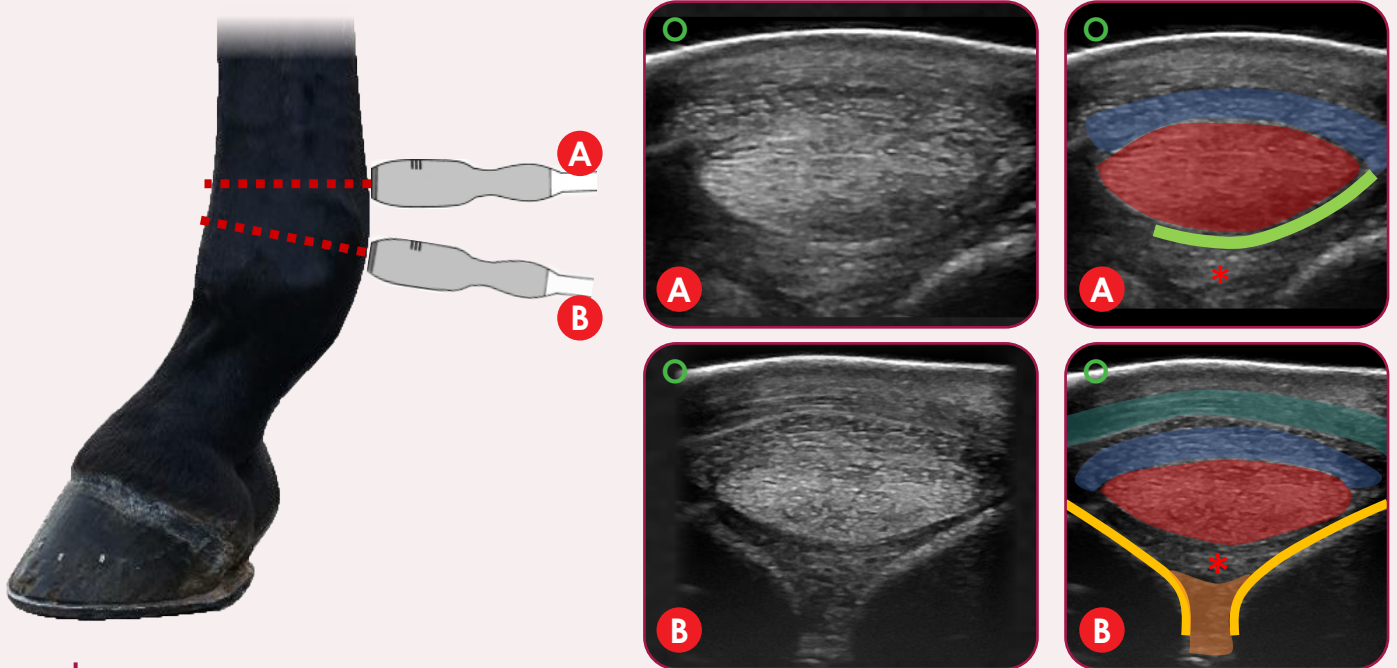


Image key

- | | | |
|---|-----------------------------------|-----------------------------|
| ● superficial digital flexor tendon | ● deep digital flexor tendon | ● intersesamoidean ligament |
| — manica flexoria (NB only medial and dorsal aspects visible) | ● palmar/plantar annular ligament | — proximal sesamoid bones |
| | | * proximal scutum |

Key: ● proximal, longitudinal image | ○ lateral, transverse image | ○ dorsal, transverse image

Contact us now

UK +44 (0) 1506 460 023 • IE +353 (0) 42 932 0070 • USA +1 (800) 210 9665

info@imv-imaging.com imv-imaging.com

Follow us



Check out our other resources

